

# Administrative Affairs Sources & Uses

## 2014/15

	<u>Gen Oper</u>	<u>Gen Oper-Cap</u>	<u>Gen Oper-Maint</u>	<u>Cost Recovery</u>	<u>Trust</u>	<u>Parking/Fines &amp; Forfeitures</u>	<u>Projects</u>	<u>Total</u>
Budget	23,342,259	-	-	3,184,520	-	-	19,988,525	46,515,304
Fund Balance	-	-	-	-	5,296,383	7,608,431	55,969	12,960,783
Rev	-	-	-	5,364,539	1,053,400	8,998,595	2,500,000	17,916,534
<b>FY14/15 Source of Funds</b>	<b>23,342,259</b>	<b>-</b>	<b>-</b>	<b>8,549,059</b>	<b>6,349,783</b>	<b>16,607,026</b>	<b>22,544,494</b>	<b>77,392,621</b>

### Actual

Salaries	13,677,746	-	-	1,219,139	930,831	1,138,137	-	16,965,853
Benefits	-	-	-	706,965	423,186	625,569	-	1,755,720
Capital	95,778	-	-	-	-	159,348	6,064,750	6,319,877
OE&E	4,568,538	-	-	2,735,607	1,856,179	4,949,163	-	14,109,487
<b>FY14/15 Use of Funds</b>	<b>18,342,062</b>	<b>-</b>	<b>-</b>	<b>4,661,712</b>	<b>3,210,195</b>	<b>6,872,217</b>	<b>6,064,750</b>	<b>39,150,936</b>

## 2015/16

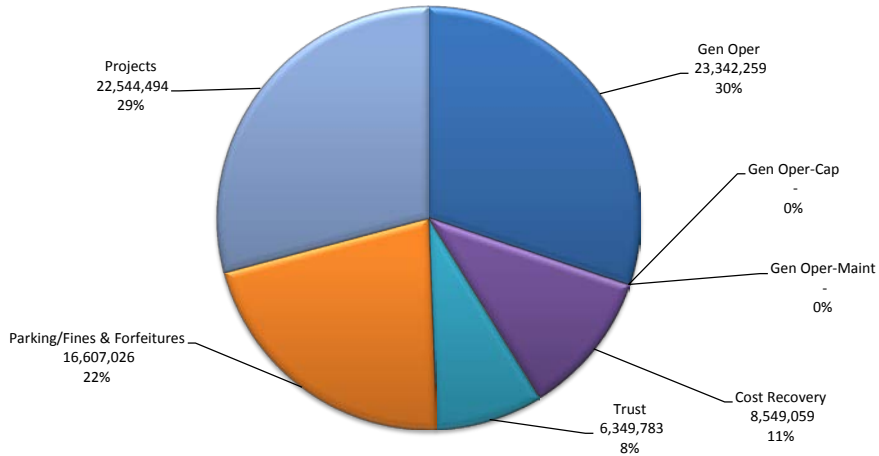
	<u>Gen Oper</u>	<u>Gen Oper-Cap</u>	<u>Gen Oper-Maint</u>	<u>Cost Recovery</u>	<u>Trust</u>	<u>Parking/Fines &amp; Forfeitures</u>	<u>Projects</u>	<u>Total</u>
Budget	24,153,970	-	501,000	4,050,849	-	-	45,547,190	74,253,009
Fund Balance	-	-	-	-	3,294,958	9,437,496	1,725,881	14,458,334
Rev	(1,237,722)	1,237,722	-	5,696,062	2,483,033	9,701,220	-	17,880,315
<b>FY15/16 Source of Funds</b>	<b>22,916,248</b>	<b>1,237,722</b>	<b>501,000</b>	<b>9,746,911</b>	<b>5,777,990</b>	<b>19,138,716</b>	<b>47,273,071</b>	<b>106,591,658</b>

### Actual

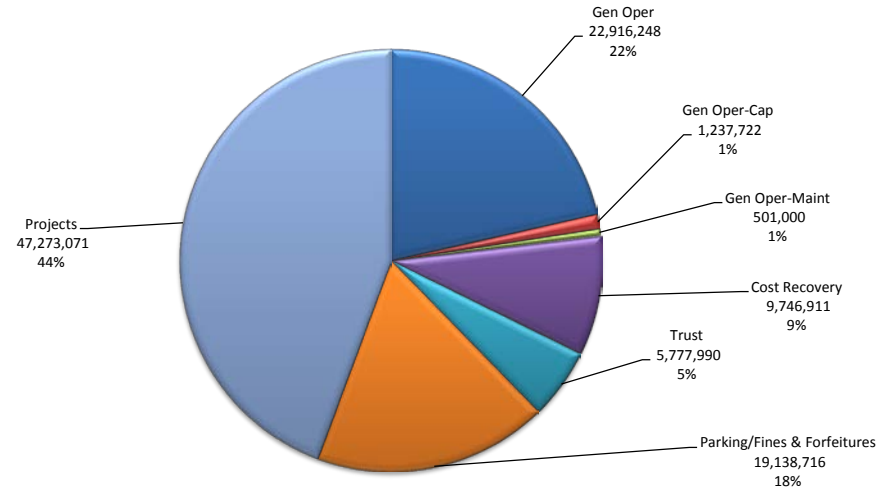
Salaries	14,319,750	-	-	1,251,969	806,855	1,038,877	-	17,417,450
Benefits	-	-	-	513,957	369,766	623,023	-	1,506,746
Capital	348,421	591,781	392,000	-	-	3,276,363	47,032,094	51,640,659
OE&E	5,730,194	-	-	3,644,162	517,108	5,674,260	986,124	16,551,848
<b>FY15/16 Use of Funds</b>	<b>20,398,365</b>	<b>591,781</b>	<b>392,000</b>	<b>5,410,087</b>	<b>1,693,729</b>	<b>10,612,523</b>	<b>48,018,218</b>	<b>87,116,704</b>

# Administrative Affairs Sources & Uses

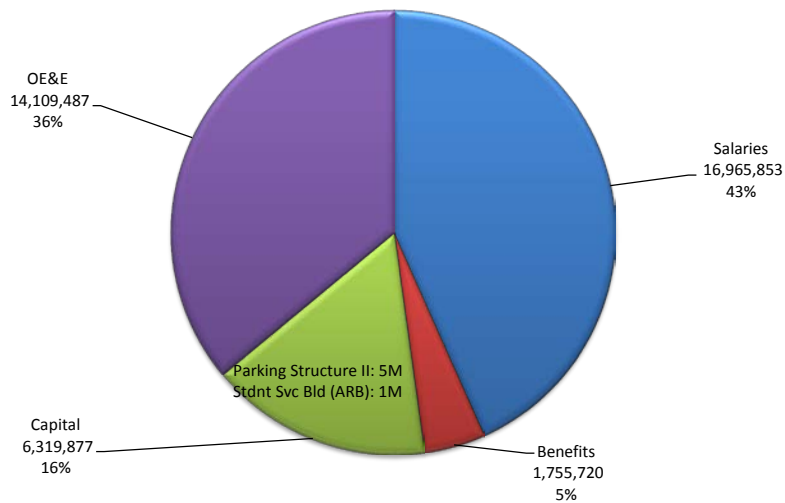
## FY14/15 Source of Funds



## FY15/16 Source of Funds



## FY14/15 Uses of Funds



## FY15/16 Uses of Funds

